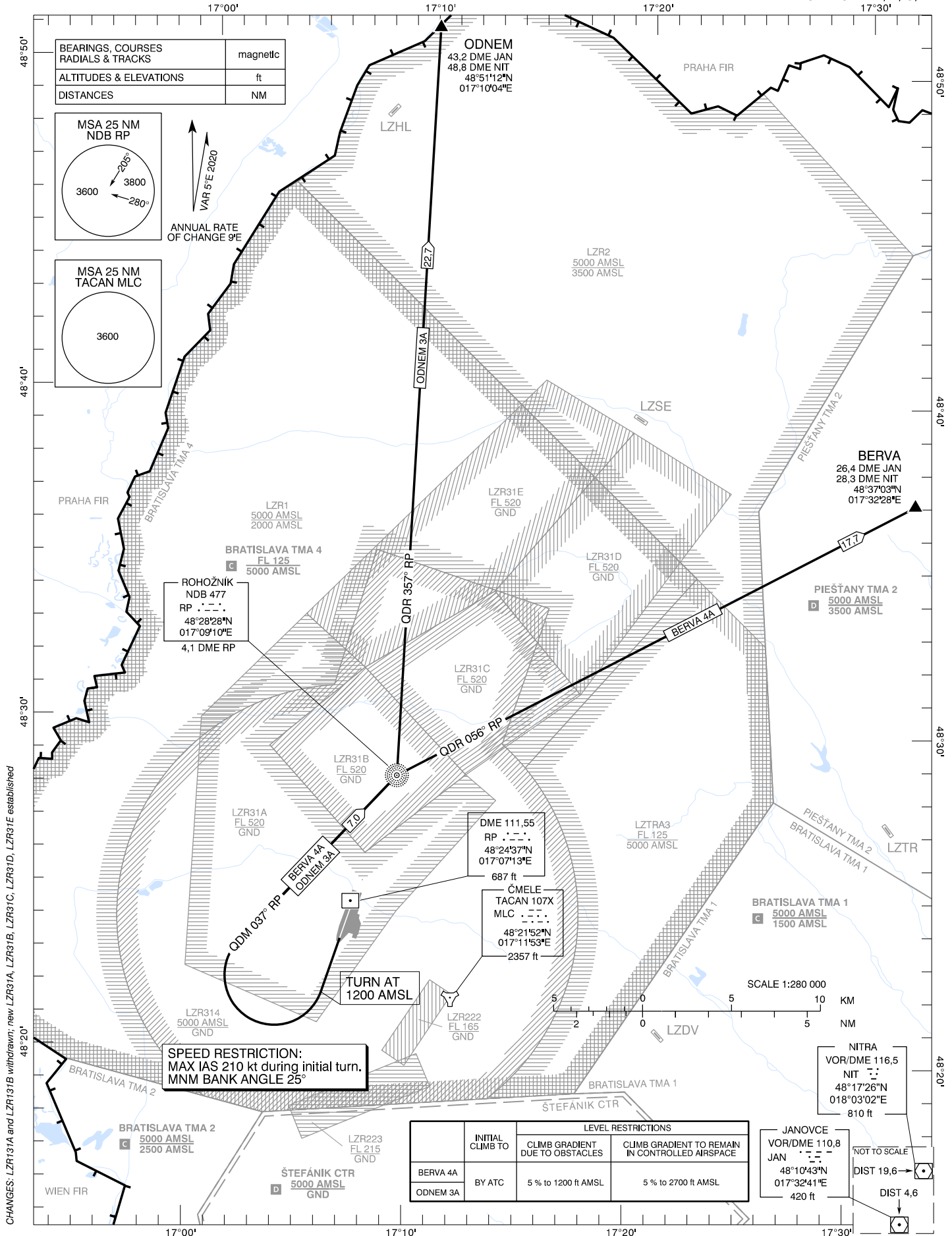


STANDARD DEPARTURE CHART -
INSTRUMENT (SID) - ICAO

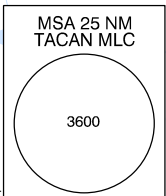
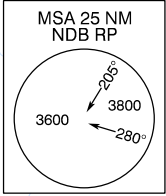
TRANSITION ALTITUDE
10 000 ft

MALACKY RADAR 120,750 (259,625)
MALACKY TOWER 129,575 (120,750)

MALACKY (LZMC)
SID RWY 19
ACFT CAT A/B/C/D



| | |
|---------------------------------------|----------|
| BEARINGS, COURSES RADIALS & TRACKS | magnetic |
| ALTITUDES & ELEVATIONS | ft |
| DISTANCES | NM |



VAR 5°E 2020
ANNUAL RATE
OF CHANGE 9'E

ROHOŽNÍK
NDB 477
RP ····
48°28'28"N
017°09'10"E
4.1 DME RP

ODNEM
43.2 DME JAN
48.8 DME NIT
48°51'12"N
017°10'04"E

BERVA
26.4 DME JAN
28.3 DME NIT
48°37'03"N
017°32'28"E

DME 111.55
RP ····
48°24'37"N
017°07'13"E
687 ft
ČMELE
TACAN 107X
MLC ····
48°21'52"N
017°11'53"E
2357 ft

SPEED RESTRICTION:
MAX IAS 210 kt during initial turn.
MNM BANK ANGLE 25°

| | INITIAL CLIMB TO | LEVEL RESTRICTIONS | |
|----------|---------------------|------------------------------------|--|
| | | CLIMB GRADIENT DUE TO OBSTACLES | CLIMB GRADIENT TO REMAIN IN CONTROLLED AIRSPACE |
| BERVA 4A | BY ATC | 5% to 1200 ft AMSL | 5% to 2700 ft AMSL |
| ODNEM 3A | | | |

JANOVCE
VOR/DME 110.8
JAN ····
48°10'43"N
017°32'41"E
420 ft
NITRA
VOR/DME 116.5
NIT ····
48°17'26"N
018°03'02"E
810 ft
DIST 19.6
DIST 4.6

CHANGES: LZR131A and LZR131B withdrawn; new LZR31A, LZR31B, LZR31C, LZR31D, LZR31E established